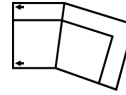
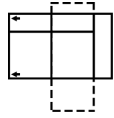




77503 FLEX

PALLISER[®]
My Home, My Style, My Way™



8R RHF Love w/Recliner 95 Chair w/Two Arms

7P LHF Wide Recliner 38 x 38 x 34"

Power 97 x 97 x 86cm

7R LHF Love w/Recliner IA: 24" / 61cm

8P RHF Love w/Power

Recliner

55 x 40 x 38"

140 x 102 x 97cm

98 RHF Angled Loveseat

97 LHF Angled Loveseat

70 x 50 x 34"

178 x 127 x 86cm



77503 FLEX

Popular Configurations

Note: Always assemble configurations from right hand facing to left hand facing components.

How We Measure

Height - measured from the highest point of the back pillow to the floor.

Depth - measured from the front edge of the seat cushion to the top of the back.

Width - measured from the widest point of the arm or arm pillow to the widest point of the opposite arm or arm pillow.

Arm Height - measured from the top of the arm to the floor.

Seat Height - measured from the crown of the seat cushion to the floor.

Warranty

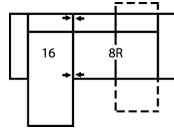
Wood Frames, Springs or Webbing - ten year warranty

Metal Frames - two year warranty under normal household use

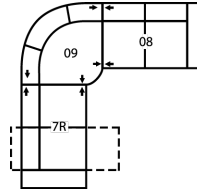
Motion Reclining Mechanisms - seven year warranty

Reclining Chairs, Sofabed Mechanisms and Sofabed Mattresses - two year warranty

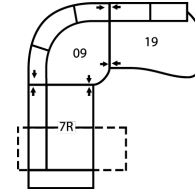
Seat Cushion Foam and Fibre-filled Components - five year pro-rated warranty



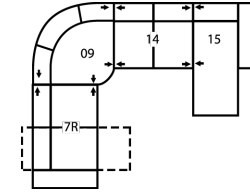
CONFIGURATION CM
86 x 60"
218 x 152cm



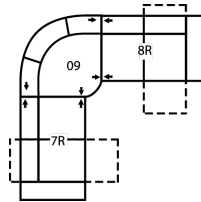
CONFIGURATION CN
104 x 104"
264 x 264cm



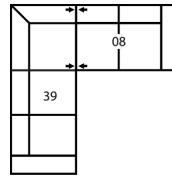
CONFIGURATION CO
112 x 104"
284 x 264cm



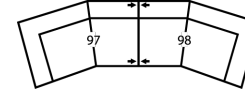
CONFIGURATION CP
128 x 104"
325 x 264cm



CONFIGURATION CQ
104 x 104"
264 x 264cm



CONFIGURATION C2
93 x 91"
236 x 231cm



CONFIGURATION C3
140 x 50"
356 x 127cm