



77332 MARYMOUNT

Popular Configurations

Note: Always assemble configurations from right hand facing to left hand facing components.

How We Measure

Height - measured from the highest point of the back pillow to the floor.

Depth - measured from the front edge of the seat cushion to the top of the back.

Width - measured from the widest point of the arm or arm pillow to the widest point of the opposite arm or arm pillow.

Arm Height - measured from the top of the arm to the floor.

Seat Height - measured from the crown of the seat cushion to the floor.

Warranty

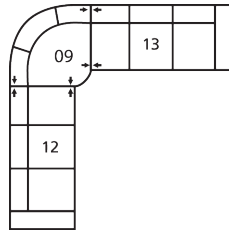
Wood Frames, Springs or Webbing - ten year warranty

Metal Frames - two year warranty under normal household use

Motion Reclining Mechanisms - seven year warranty

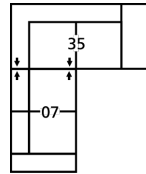
Reclining Chairs, Sofabed Mechanisms and Sofabed Mattresses - two year warranty

Seat Cushion Foam and Fibre-filled Components - five year pro-rated warranty



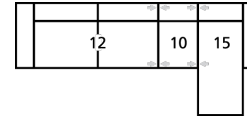
CONFIGURATION CA

125 x 125"
318 x 318cm



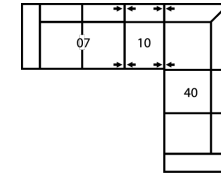
CONFIGURATION CE

91 x 83"
231 x 211cm



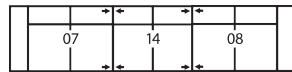
CONFIGURATION CF

130 x 60"
330 x 152cm



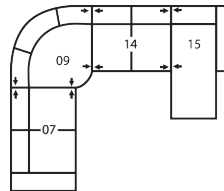
CONFIGURATION CH

114 x 89"
290 x 226cm



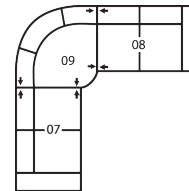
CONFIGURATION CK

198 x 38"
503 x 97cm



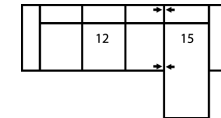
CONFIGURATION C4

126 x 102"
320 x 259cm



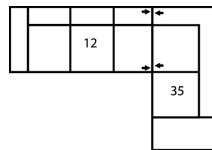
CONFIGURATION C7

102 x 102"
259 x 259cm



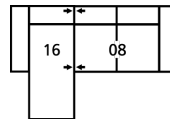
CONFIGURATION C8

107 x 60"
272 x 152cm



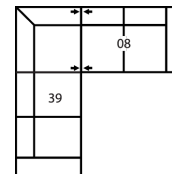
CONFIGURATION C9

114 x 83"
290 x 211cm



CONFIGURATION C1

84 x 60"
213 x 152cm



CONFIGURATION C2

91 x 89"
231 x 226cm